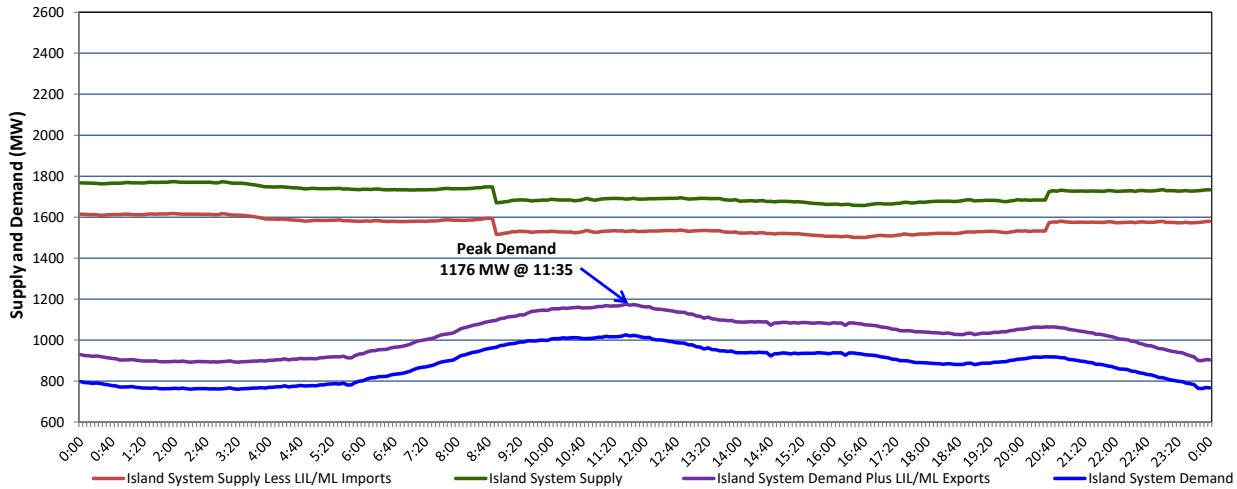


## Newfoundland Labrador Hydro (NLH) Supply and Demand Status Report Filed Monday, April 18, 2022

### Section 1 Island Interconnected System Supply, Demand & Exports Actual 24 Hour System Performance For Sunday, April 17, 2022



#### Supply Notes For April 17, 2022

1,2

- A As of 0857 hours, April 04, 2022, Holyrood Unit 3 unavailable due to planned outage (150 MW).  
 B As of 1700 hours, April 10, 2022, Holyrood Unit 2 available but not operating 150 MW (170 MW).  
 C As of 0850 hours, April 11, 2022, Bay d'Espoir Unit 1 unavailable due to planned outage (76.5 MW).  
 D As of 1254 hours, April 14, 2022, Holyrood Unit 1 available at 140 MW (170 MW).  
 E **At 0846 hours, April 17, 2022, Bay d'Espoir Unit 6 unavailable (76.5 MW).**  
 F **At 2031 hours, April 17, 2022, Granite Canal Unit available (40 MW).**

### Section 2 Island Interconnected Supply and Demand

Mon, Apr 18, 2022	Island System Outlook <sup>3</sup>	Seven-Day Forecast	Temperature (°C)		Island System Daily Peak Demand (MW)	
			Morning	Evening	Forecast	Adjusted <sup>7</sup>
Available Island System Supply: <sup>5</sup>	1,646 MW	Monday, April 18, 2022	4	2	1,160	1,067
NLH Island Generation: <sup>4,8</sup>	1,115 MW	Tuesday, April 19, 2022	-2	-3	1,205	1,111
NLH Island Power Purchases: <sup>6</sup>	150 MW	Wednesday, April 20, 2022	1	7	1,215	1,121
Other Island Generation:	225 MW	Thursday, April 21, 2022	4	1	1,105	1,012
ML/LIL Imports:	156 MW	Friday, April 22, 2022	1	4	1,160	1,067
Current St. John's Temperature & Windchill:	2 °C N/A °C	Saturday, April 23, 2022	4	3	1,020	928
7-Day Island Peak Demand Forecast:	1,215 MW	Sunday, April 24, 2022	1	2	1,140	1,047

#### Supply Notes For April 18, 2022

3

- G **At 0707 hours, April 18, 2022, Bay d'Espoir Unit 4 unavailable (76.5 MW).**

- Notes:
- Generation outages for running and corrective maintenance are included. These are not unusual for power system operations. They generally do not impact customer supply. The power system operators schedule outages to system equipment whenever possible to coincide with periods when customer demands are low and sufficient supply reserves are available. However, from time to time equipment outages are necessary and reserves may be impacted.
  - Due to the Island system having no synchronous connections to the larger North American grid, when there is a sudden loss of large generating units there may be a requirement for some customer's load to be interrupted for short periods to bring generation output equal to customer demand. This automatic action of power system protection, referred to as under frequency load shedding (UFLS), is necessary to ensure the integrity and reliability of system equipment. Under frequency events have typically occurred 5 to 8 times per year on the Island Interconnected System and the resultant customer load interruptions are generally less than 30 minutes. With the activation of the Maritime Link frequency controller during the winter of 2018, UFLS events have occurred less frequently.
  - As of 0800 Hours.
  - Gross output including station service at Holyrood (24.5 MW) and improved NLH hydraulic output due to water levels (35 MW).
  - Gross output from all Island sources (including Note 4).
  - NLH Island Power Purchases include: CBPP Co-Gen, Nalcor Exploits, Rattle Brook, Star Lake, Wind Generation and capacity assistance (when applicable).
  - Adjusted for curtailable load, market activities and the impact of voltage reduction when applicable.
  - Due to limitations inherent in the design of combustion turbines, the output of combustion turbines may be reduced in the event that ambient temperatures exceed the threshold.

### Section 3 Island Peak Demand Information Previous Day Actual Peak and Current Day Forecast Peak

Sun, Apr 17, 2022	Actual Island Peak Demand <sup>9</sup>	11:35	1,176 MW
Mon, Apr 18, 2022	Forecast Island Peak Demand		1,160 MW

- Notes: 9. Island Demand / LIL / ML Exports (where applicable) is supplied by NLH generation and purchases, plus generation owned and operated by Newfoundland Power and Corner Brook Pulp & Paper (Deer Lake Power, DLP).